

# BIG BEAR POLYURETHANE 95 Shore A (Soft)

## BB POLYURETHANE 95 SHORE A

■ (SMOOTH/SMOOTH)

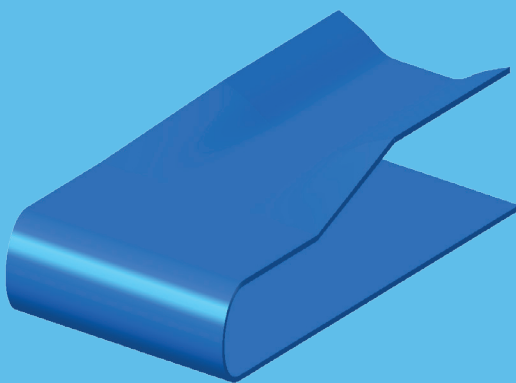
Code	Colour	Thickness (mm)	Weight	Minimum Pulley Dia.	Workload, resulting in 1% stretch	Operating Temp °C	Max. Width (mm)
BB15	Clear	1.5mm	1.2kg/m <sup>2</sup>	25mm	0.9N/mm	-20 to +70°C	1200-1300
BB20	Blue/Ivory	2.0mm	2.4kg/m <sup>2</sup>	30mm	1.2N/mm	-20 to +70°C	1200-1300
BB25	Blue/Ivory	2.5mm	3.0kg/m <sup>2</sup>	38mm	1.6N/mm	-20 to +70°C	1200-1300
BB30	Blue/Ivory	3.0mm	3.6kg/m <sup>2</sup>	45mm	1.8N/mm	-20 to +70°C	1200-1300
BB40	Blue/Ivory	4.0mm	4.8kg/m <sup>2</sup>	60mm	2.4N/mm	-20 to +70°C	1200-1300

## BB POLYURETHANE 95 SHORE A

■ (DIAMOND EMBOSSSED)

Code	Colour	Thickness (mm)	Weight	Minimum Pulley Dia.	Workload, resulting in 1% stretch	Operating Temp °C	Max. Width (mm)
BB20DE	Blue/Ivory	2.0mm	2.3kg/m <sup>2</sup>	30mm	1.2N/mm	-20 to +70°C	1200-1300
BB25DE	Blue/Ivory	2.5mm	3.0kg/m <sup>2</sup>	38mm	1.6N/mm	-20 to +70°C	1200-1300
BB30DE	Blue/Ivory/Clear	3.0mm	3.5kg/m <sup>2</sup>	45mm	1.8N/mm	-20 to +70°C	1200-1300
BB40DE	Blue/Ivory	4.0mm	4.7kg/m <sup>2</sup>	60mm	2.4N/mm	-20 to +70°C	1200-1300

### APPLICATION



BB Polyurethane is manufactured without fabric plies making it ideal for use in high contamination environments and processing applications such as cheese, milk, meat & poultry.

BB Polyurethane cut, tear and abrasion resistance means that BB Polyurethane is the ideal choice in high wear applications such as the Brick & Tile Industry, Timber and steel processing accumulation.

\*USDA approved and meets FDA requirements for contact with dry, bulk, fatty and wet foods.

